



Upcycled linen blouse

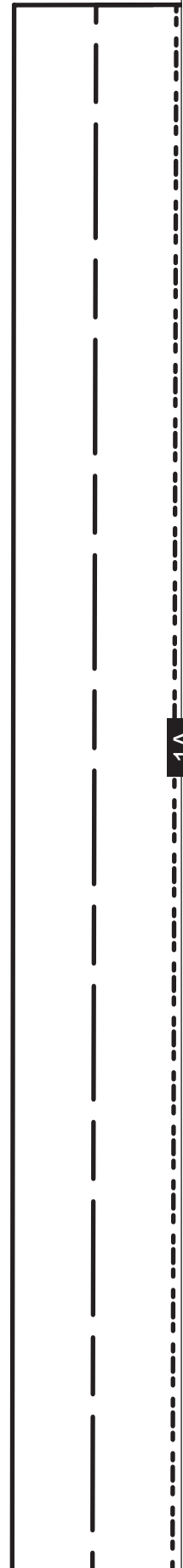
PROJECT DESIGN © LOVE PRODUCTIONS 2024
THIS DESIGN IS PROTECTED BY COPYRIGHT
AND MUST NOT BE MADE FOR RESALE.

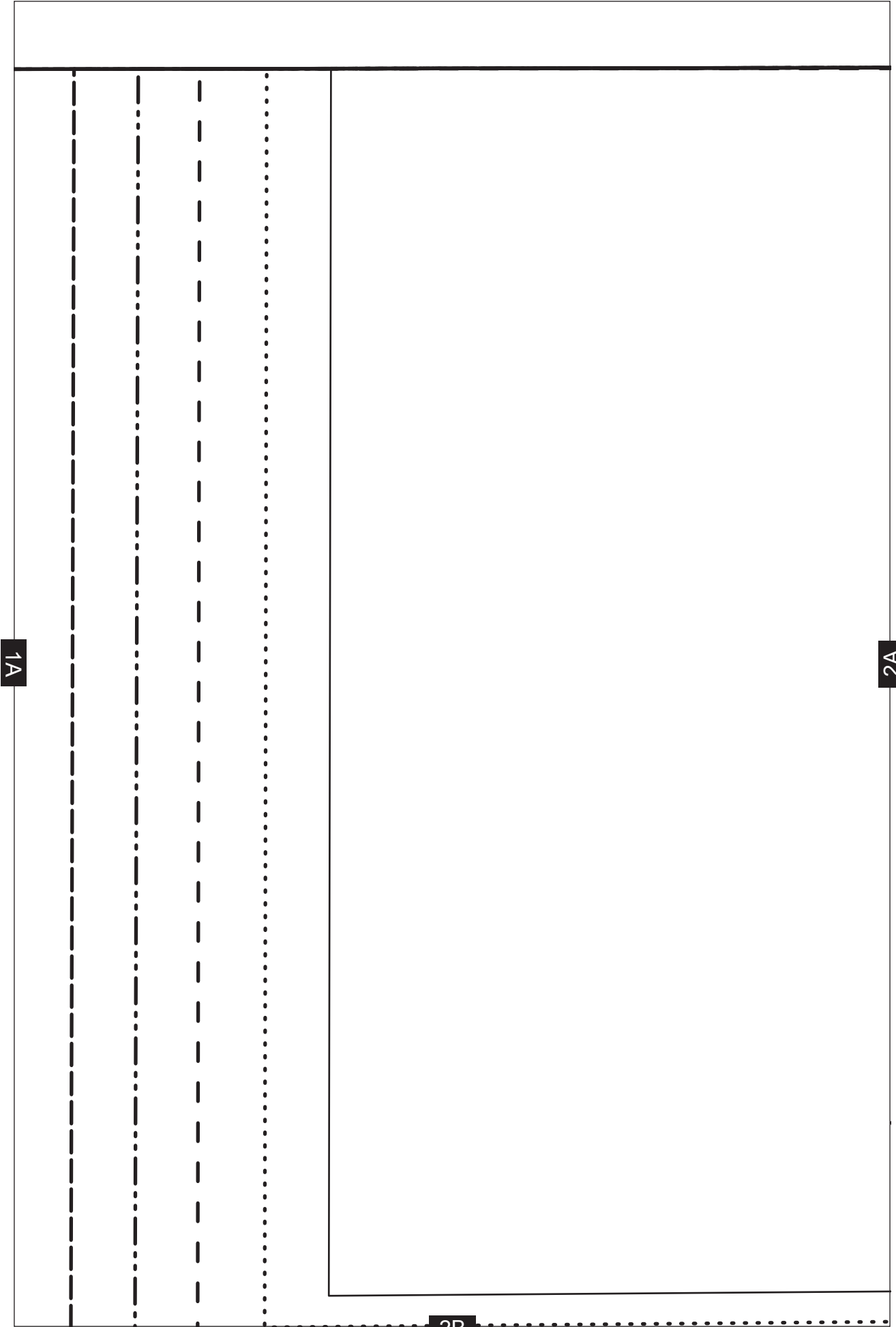
1.5-CM (5/8-IN.) SEAM ALLOWANCE INCLUDED (UNLESS OTHERWISE STATED)

TEST SQUARE: 10CM x 10CM / 4 INCHES x 4 INCHES

SIZING KEY

—————	8
.....	10
- - - - -	12
- . - . - .	14
- - - - -	16
- . - . - .	18
- - - - -	20
—————	22





3A

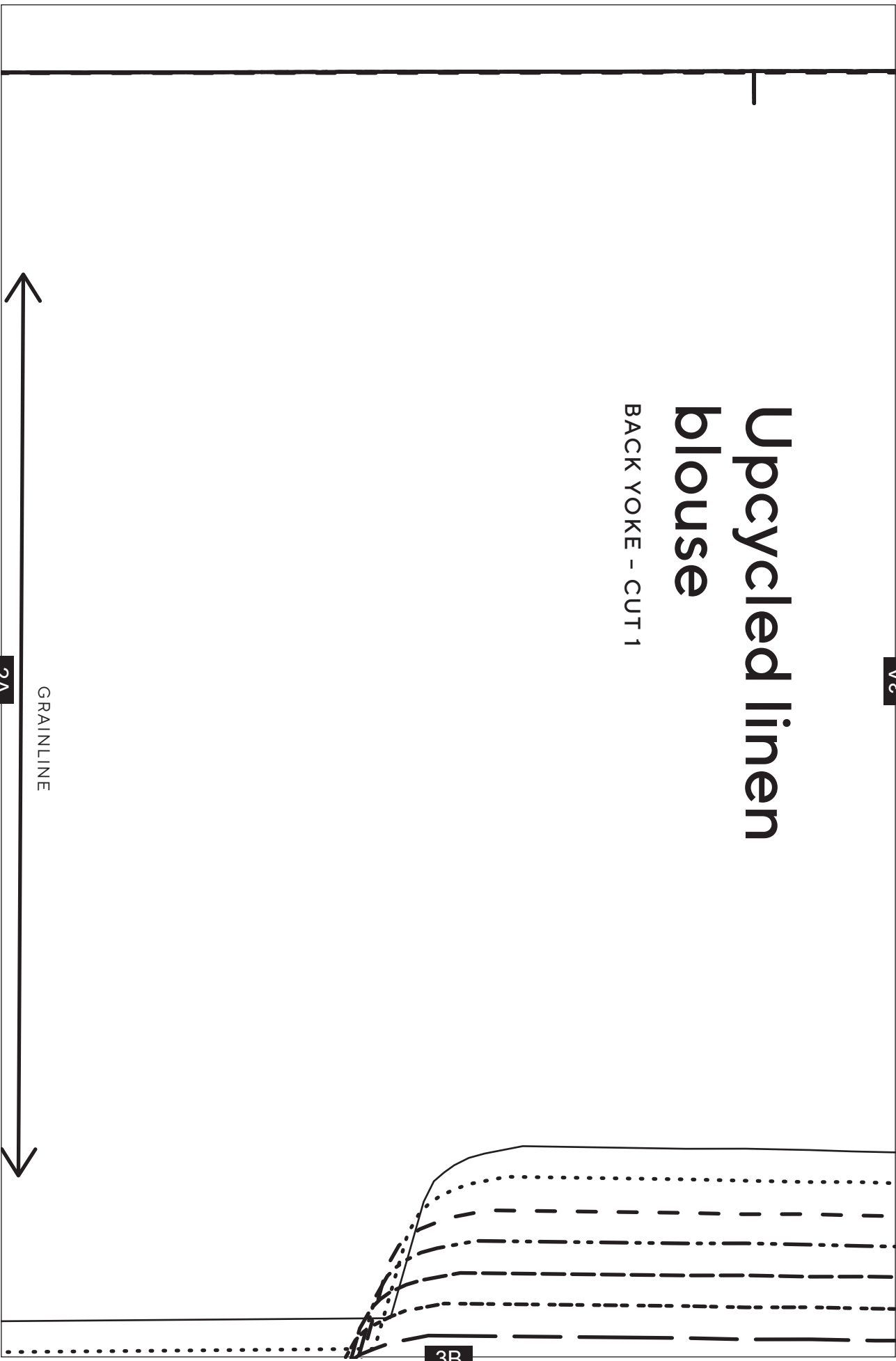
Upcycled linen blouse

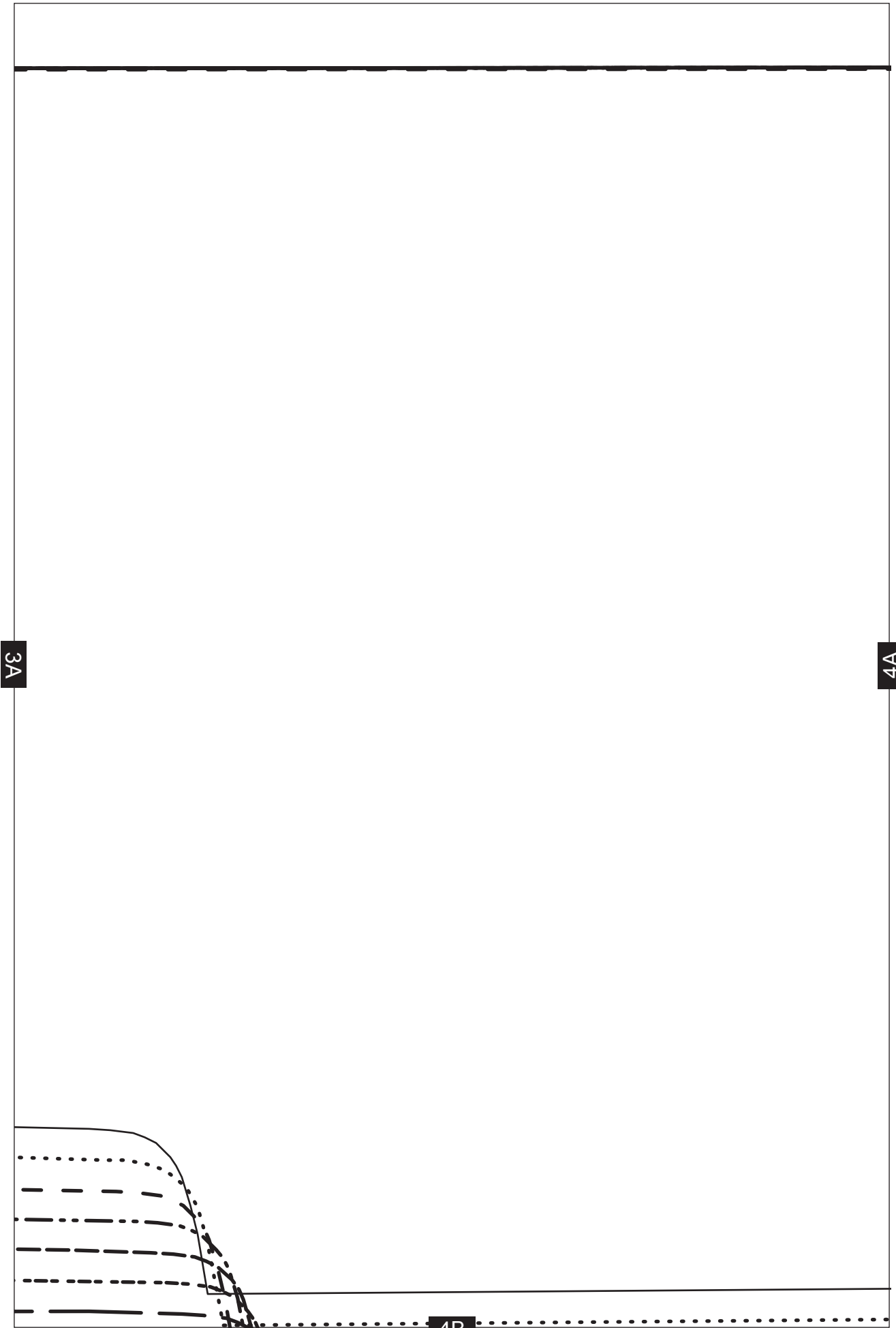
BACK YOKE - CUT 1

3B

GRAINLINE

2A





4A

8

10

12

14

16

18

20

22

5B

5A

6A

8

10

12

14

16

18

20

22

6B

5A

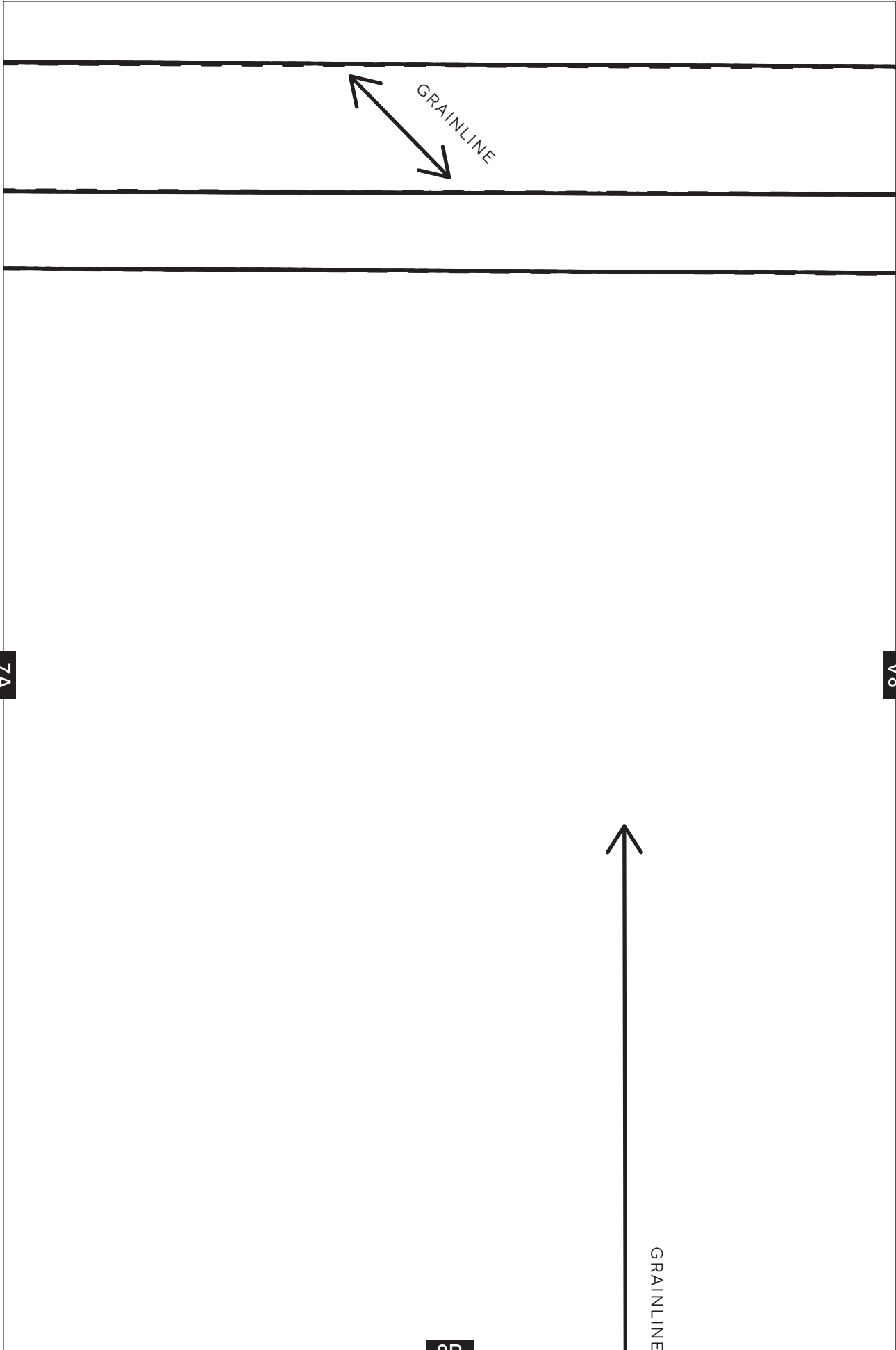
Upcycled linen blouse

NECK BINDING - CUT 1

6A

7A

7B



8A

9A

Upcycled linen blo

SLEEVE - CUT 2

9B

9A

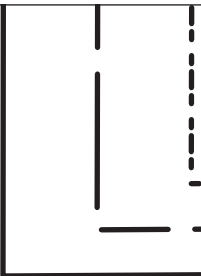
use

10B

8	10	12	14	16	18	20	22
---	----	----	----	----	----	----	----

Handwriting practice lines consisting of a solid top line, a dashed middle line, and a solid bottom line, repeated multiple times.

1B



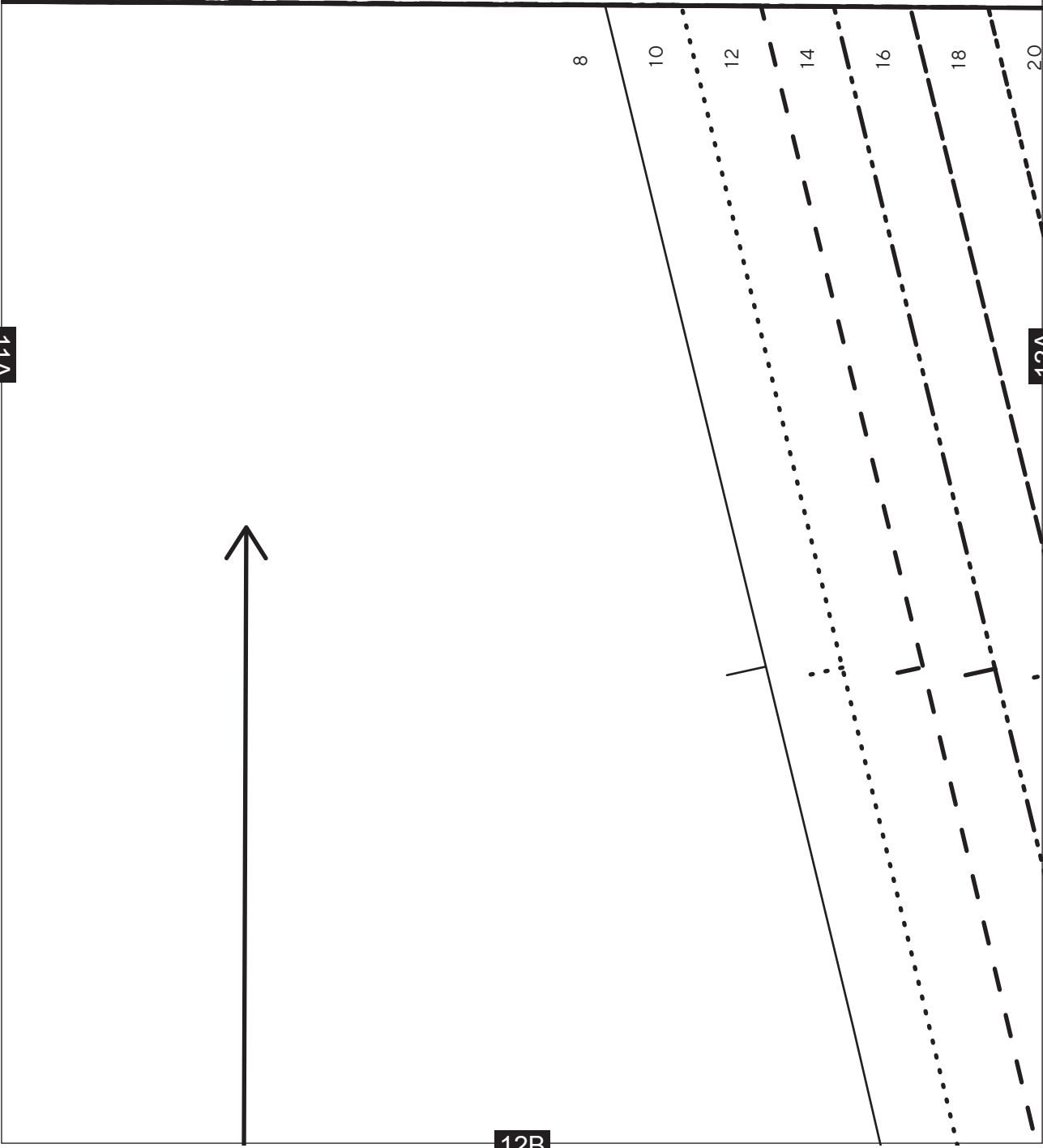
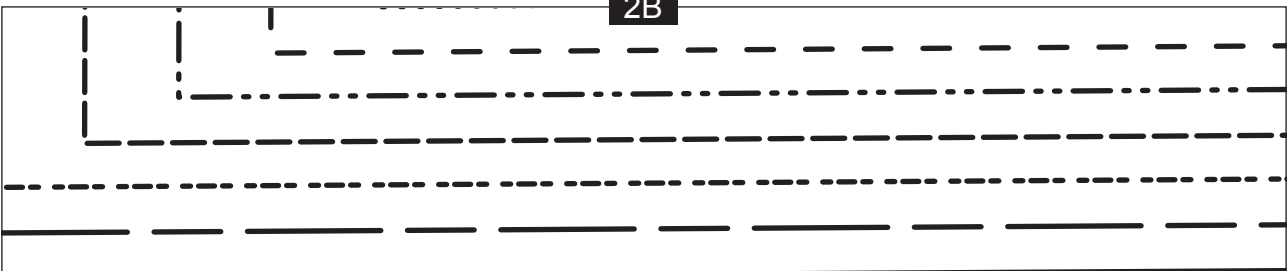
11A

Upcycle
LOWER BODICE

11B



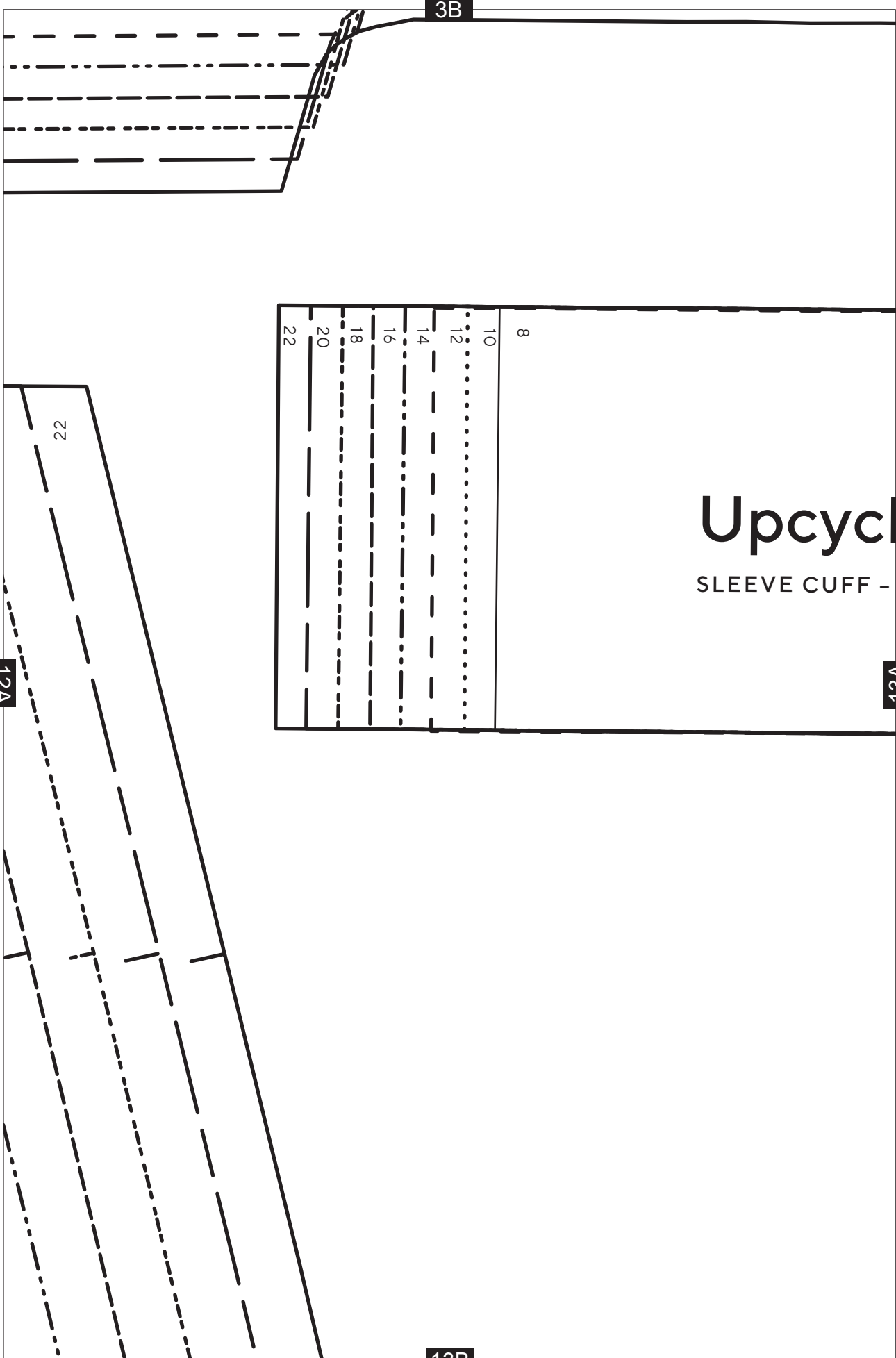
2B



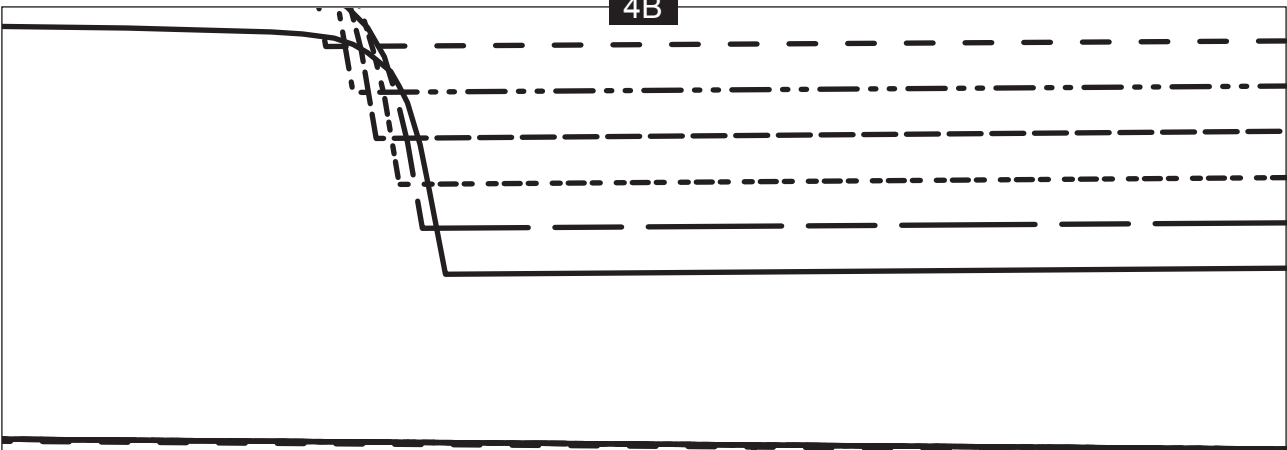
11A

12A

12B



4B



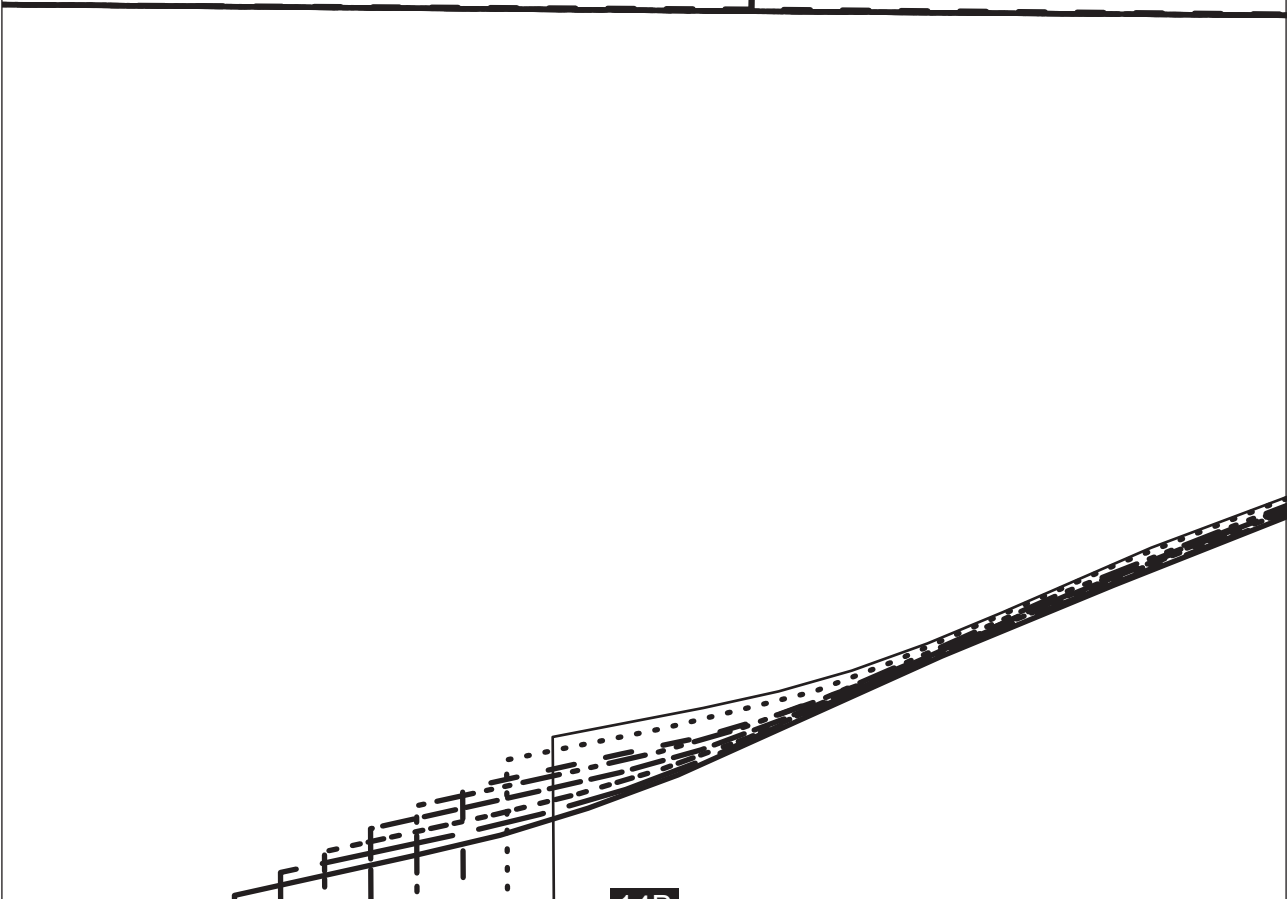
← GRAINLINE

ed linen blouse

CUT 2

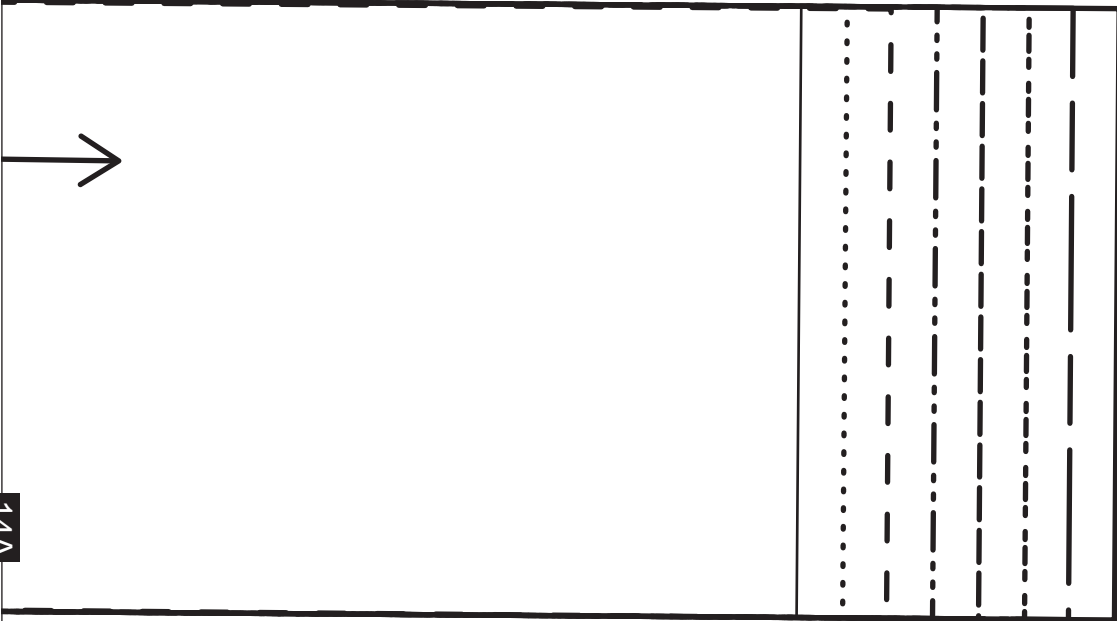
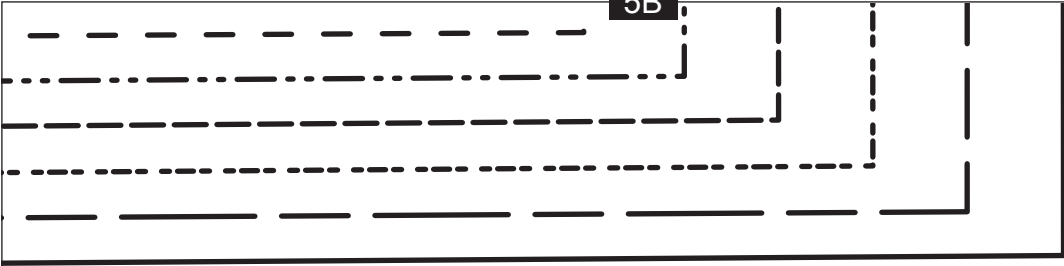
13A

14A



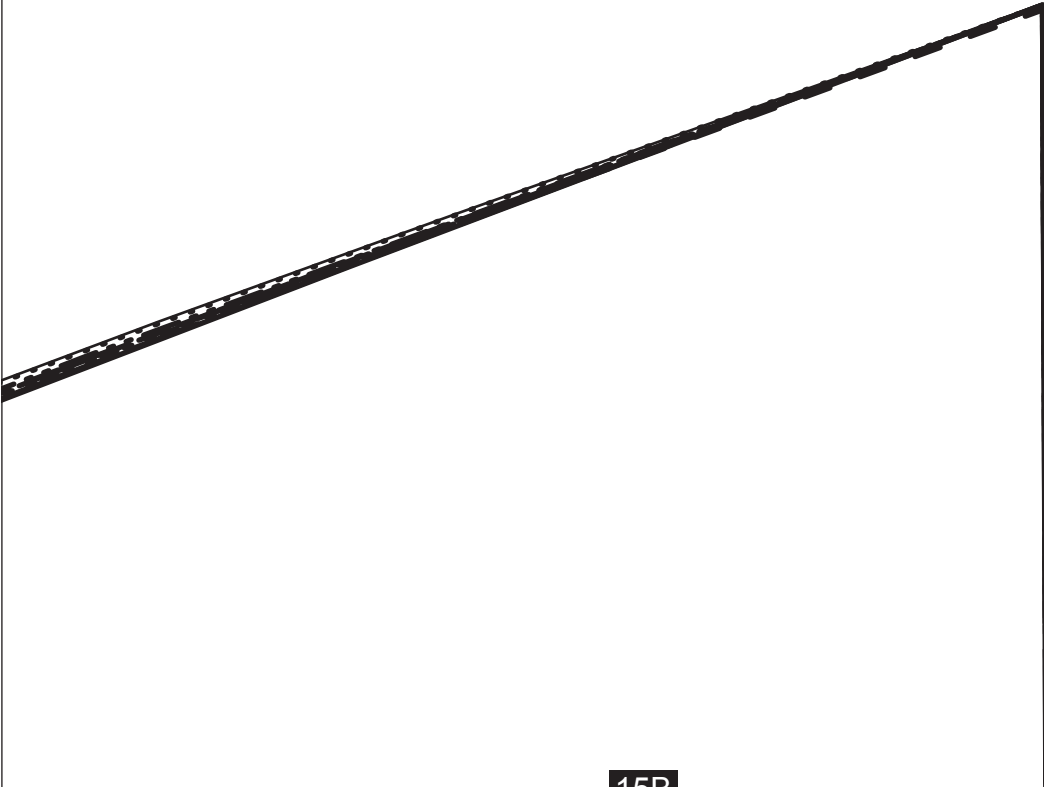
14B

5B



14A

15A



15B

15A

6B

<p>Handwriting practice lines consisting of five horizontal rows:</p> <ul style="list-style-type: none">Row 1: Solid top line, dashed midline, solid bottom line.Row 2: Dotted top line, dashed midline, solid bottom line.Row 3: Solid top line, dashed midline, dotted bottom line.Row 4: Dotted top line, dashed midline, dotted bottom line.Row 5: Solid top line, solid midline, solid bottom line.
--

16A

7B

16A

17A

8B



17A

18A

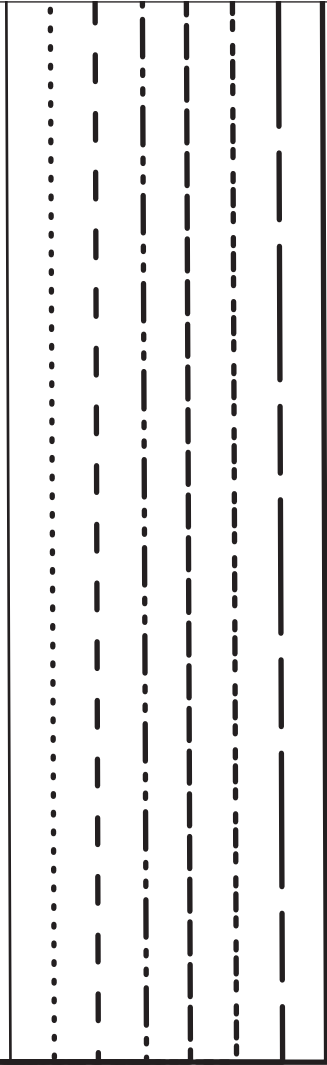


9B

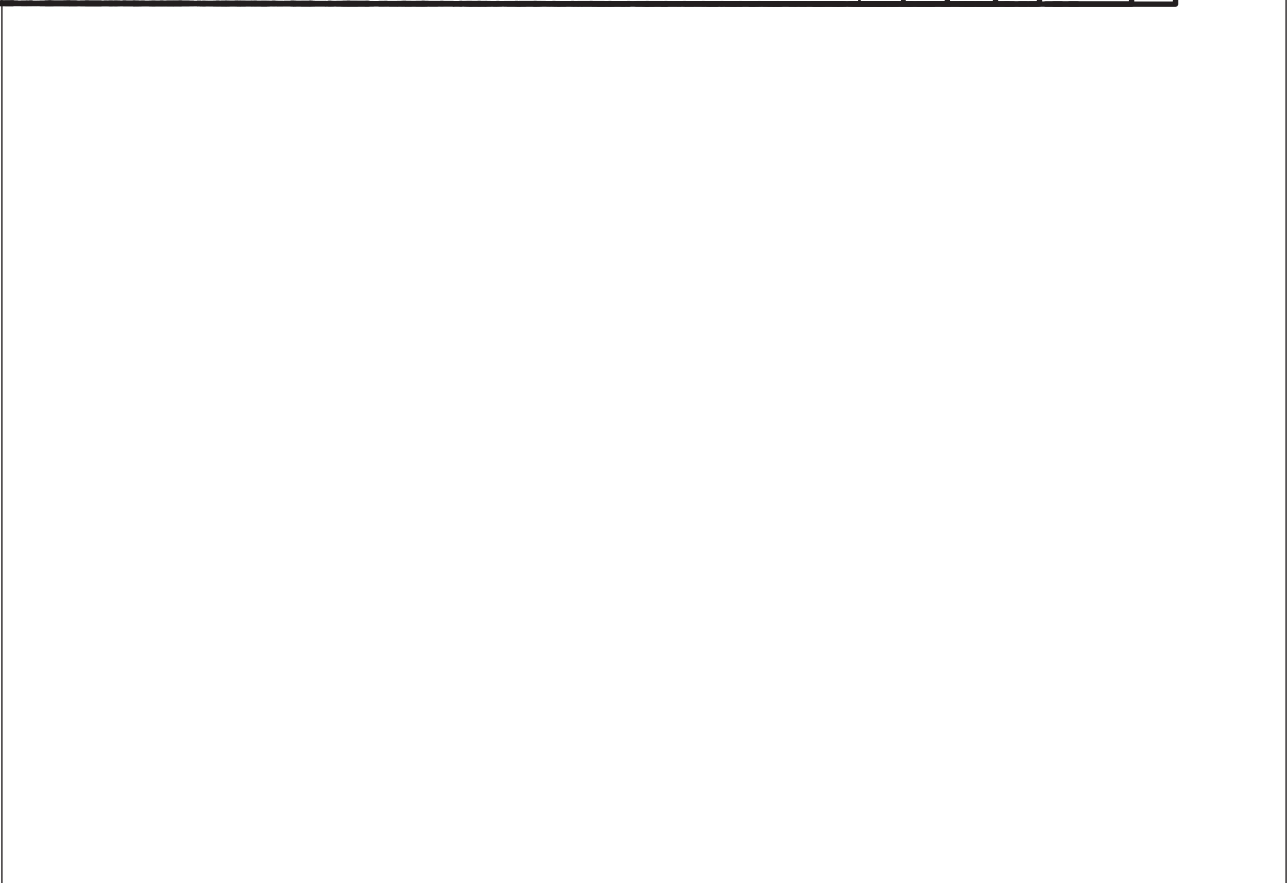
18A

19A

10B



19A

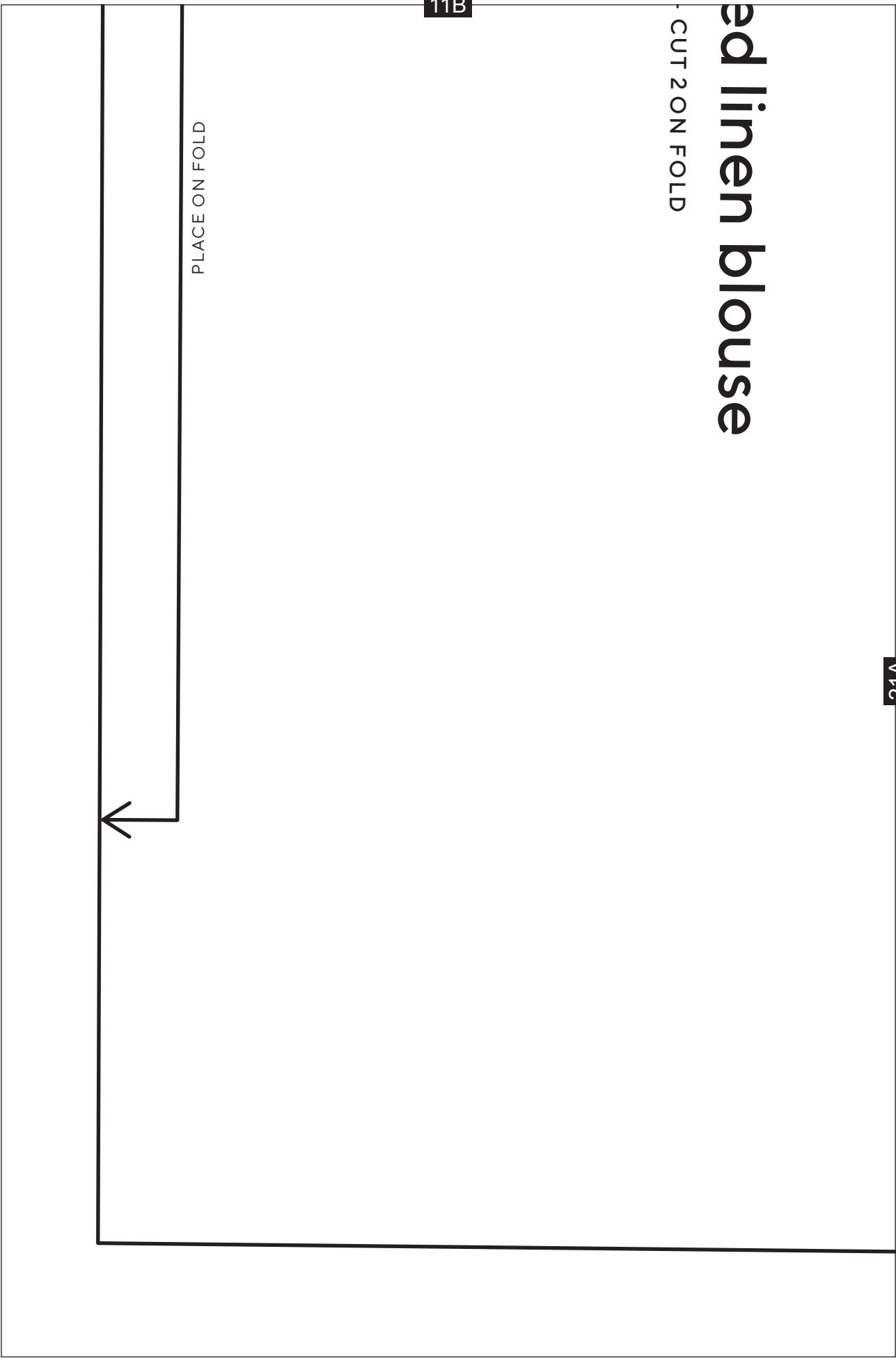


ad linen blouse

CUT 2 ON FOLD

11B

PLACE ON FOLD



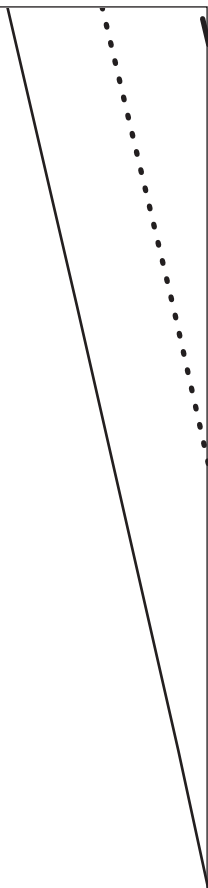
12B

GRAINLINE



21A

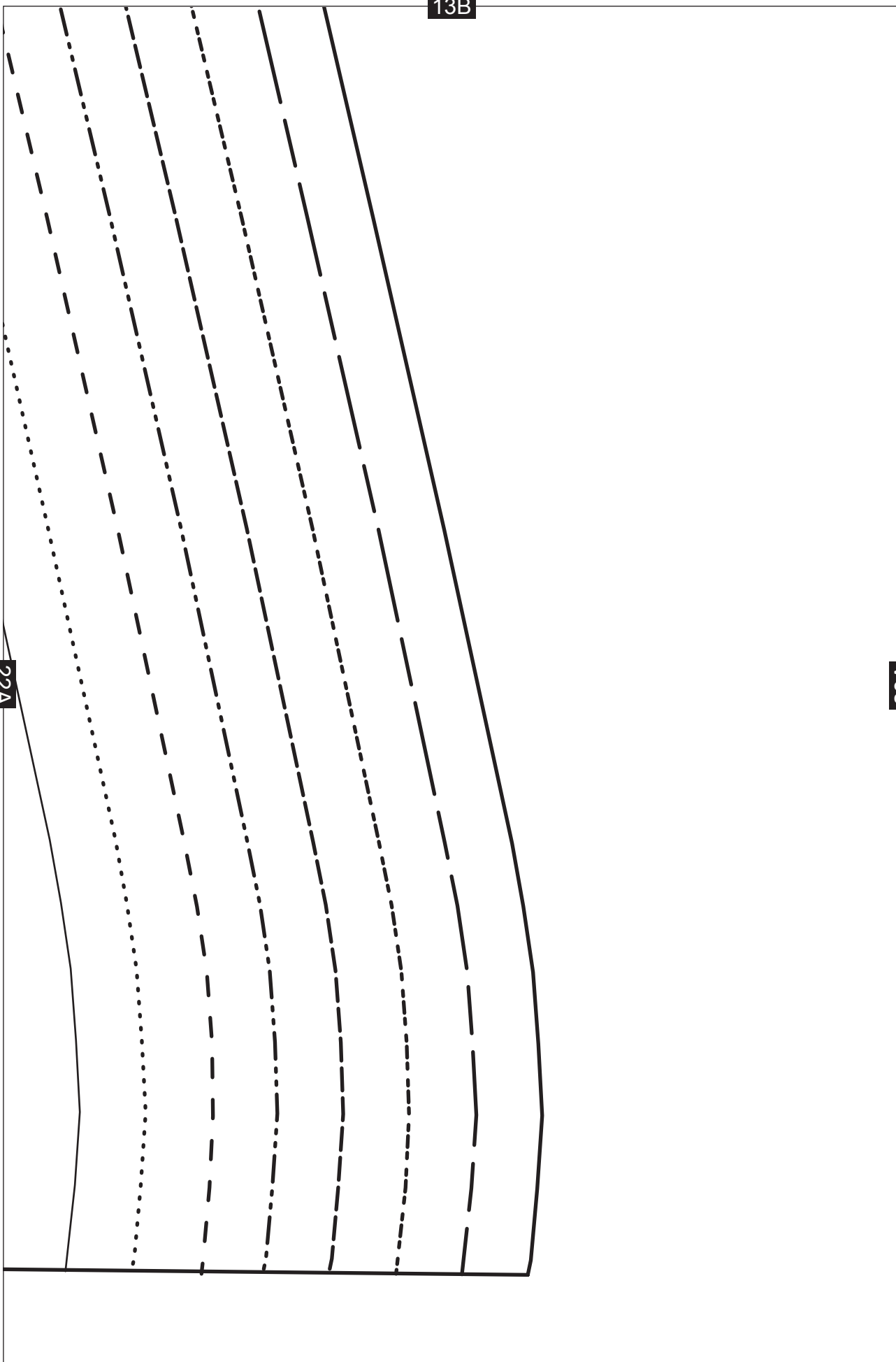
22A



13B

22A

23A



14B



Upcycled blouse

FRONT YOKE

SHOULDER

23A

24A

8

10

12

14

16

18

20

22

15B

GRAINLINE



led linen

e

CUT 2

24A

